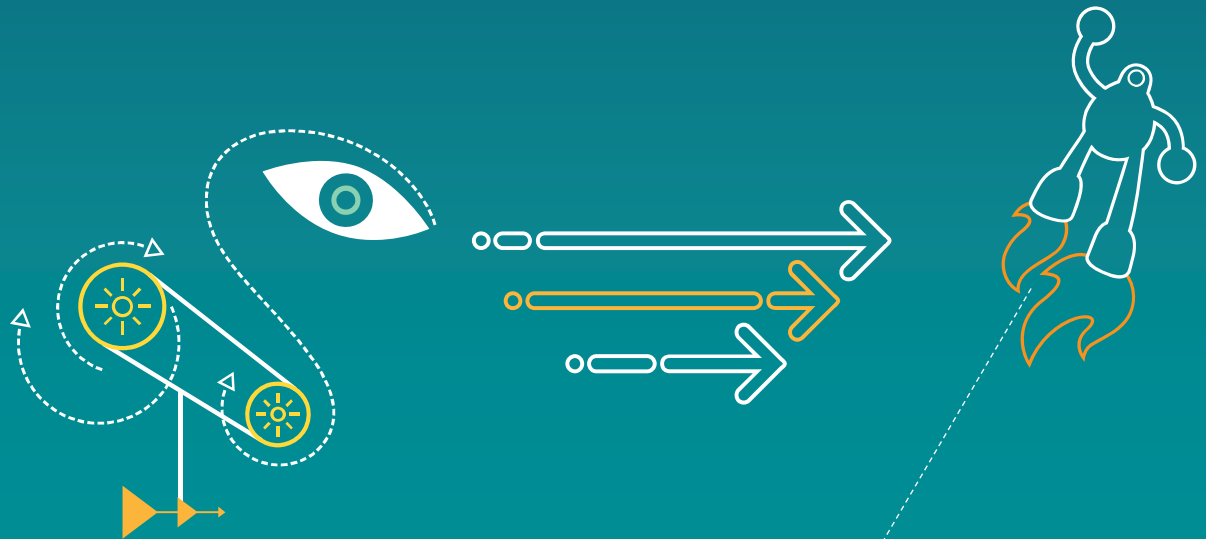


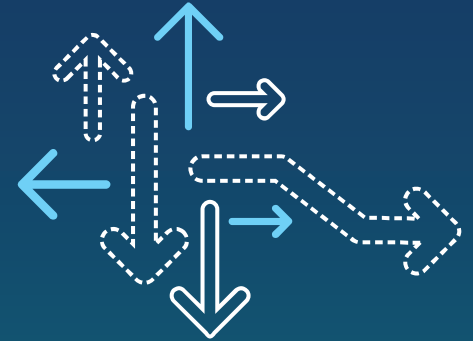
Tim Loomis

VP and Legal Council, IP Policy August

~~Innovation and~~ Competitiveness in the Global Economic Environment

QUALCOMM®





Qualcomm Virtuous Cycle

Our model has succeeded in each generation of technology

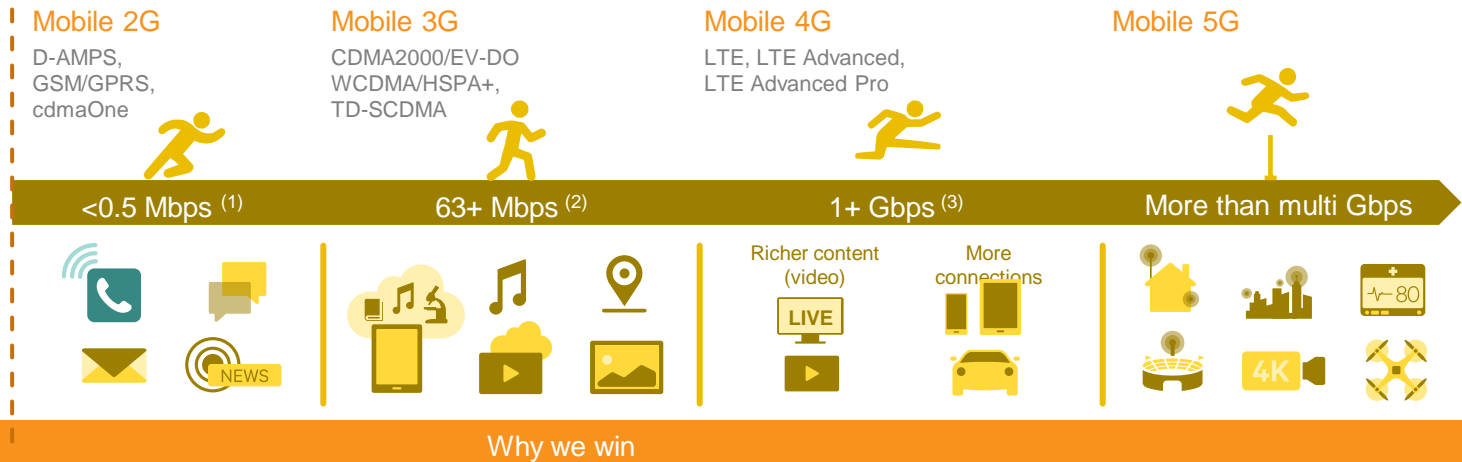
Technology complexity is accelerating—we solve complex problems for the industry

Mobile everywhere

~7.4B

Global cellular connections*

*GSMA Intelligence, Apr. '16



Scale, reach and technology/IP powerhouse

~119,000
Total worldwide patents[^]

310+ 3G licensees[^]
180+ single-mode 4G only licensees[^]

932M
MSM chipsets shipped in FY2015

Technology leadership^{***}



#1 in RF



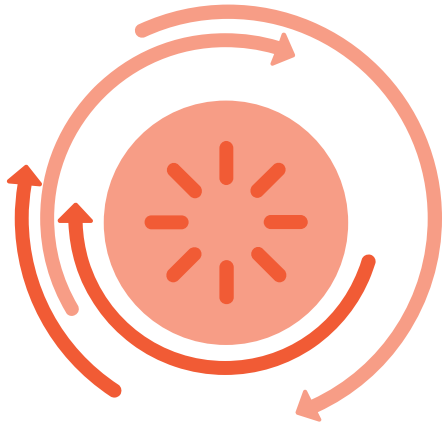
#1 in 3G/4G LTE modem



#1 in smartphone apps processor/SoC

***Sources: IHS, Jan. '16 (RF); Strategy Analytics, Dec. '15 (modem, AP)

Qualcomm business model



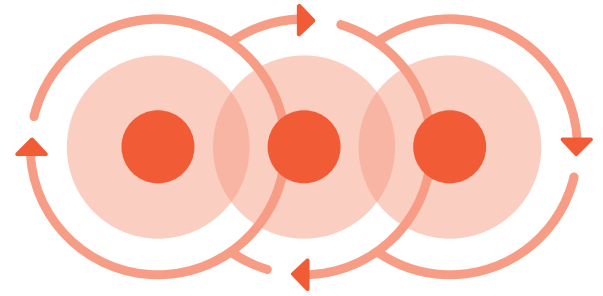
Invent

Passionately engineering
new technologies



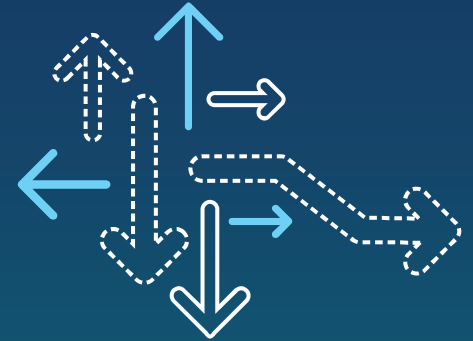
Share

Proliferating with licensing
and chipsets



Collaborate

Supporting implementation
across the ecosystem



Qualcomm's Involvement in Brazil

Qualcomm in Brazil

Two Offices

- Brasilia
- Sao Paulo

132 Issued
Brazilian
Patents





Wireless Reach Ventures in Brazil

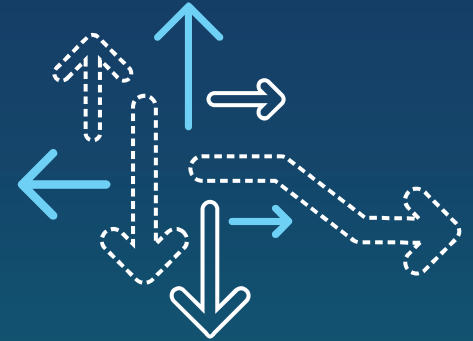
- **Farming with Drones**

- Utilizing drone technology will allow farmers access to crop intelligence metrics. The ability to pinpoint problem areas allows for spot application rather than whole field treatment, reducing negative impacts on the environment.

- **Fishing with 3G Nets**

- Mobil devices with customized applications that are used by fisherman to track revenue and expenses while on a fishing trip. Local business owners can place their orders online, and the fish is delivered at their doorstep a few hours later.



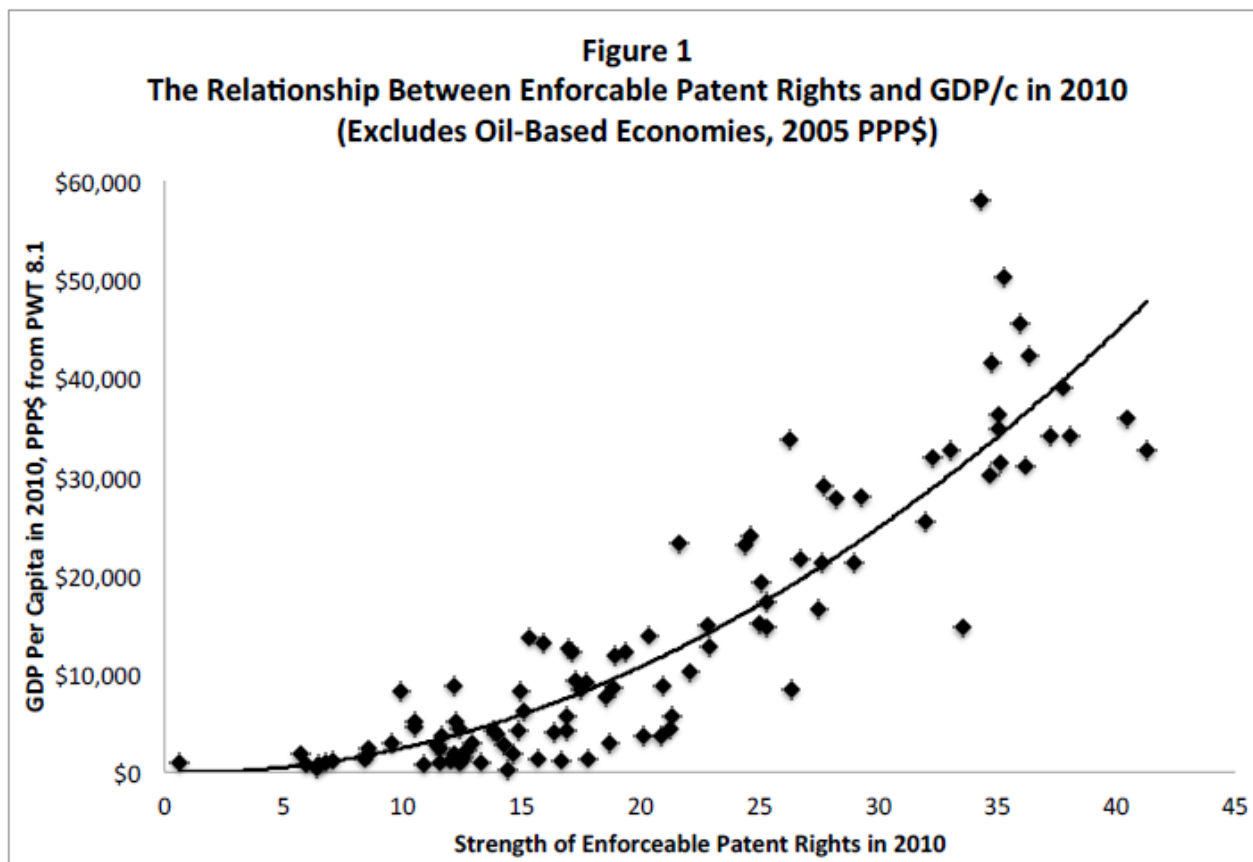


Innovation

Innovation

Role of Patents:

- Patents boost national economy (see figure below)
 - http://papers.ssrn.com/sol3/papers.cfm?abstract_id=2776773
- Patents provide means to earn fair return on investment for risky research and development (R&D)



Innovation

China

- IP Courts
- Filing subsidies
- #1 and #3 filers of PCT applications in 2015

India

- Modernization
 - Electronic systems
 - E-filing/mailing
 - On-line database
 - WIPO Digital Access Service
- Strengthening
 - Hiring many more Examiners
 - Examination guidelines
 - Workload balancing between four offices
 - MoU with EPO
 - MoC with JPO
 - Start-up IP Protection program

Thank you

All data and information contained in or disclosed by this document is confidential and proprietary information of Qualcomm Incorporated and all rights therein are expressly reserved. By accepting this material the recipient agrees that this material and the information contained therein is to be held in confidence and in trust and will not be used, copied, reproduced in whole or in part, nor its contents revealed in any manner to others without the express written permission of Qualcomm Incorporated.

© 2013 QUALCOMM Incorporated and/or its subsidiaries. All Rights Reserved.

Qualcomm is a trademark of Qualcomm Incorporated, registered in the United States and other countries. Other products and brand names may be trademarks or registered trademarks of their respective owners

References in this presentation to “Qualcomm” may mean Qualcomm Incorporated, Qualcomm Technologies, Inc., and/or other subsidiaries or business units within the Qualcomm corporate structure, as applicable.

Qualcomm Incorporated includes Qualcomm’s licensing business, QTL, and the vast majority of its patent portfolio. Qualcomm Technologies, Inc., a wholly-owned subsidiary of Qualcomm Incorporated, operates, along with its subsidiaries, substantially all of Qualcomm’s engineering, research and development functions, and substantially all of its product and services businesses, including its semiconductor business.

